



**Step 1 : Request
Registration for
Foundations Class
through your
Supervisor**



**Step 2 :
Complete
Online Unit 1
Prior to First
Classroom
Session**



**Step 3 : Complete
Online Sessions
2-6 specific to
each week before
attending the
classroom
session.**

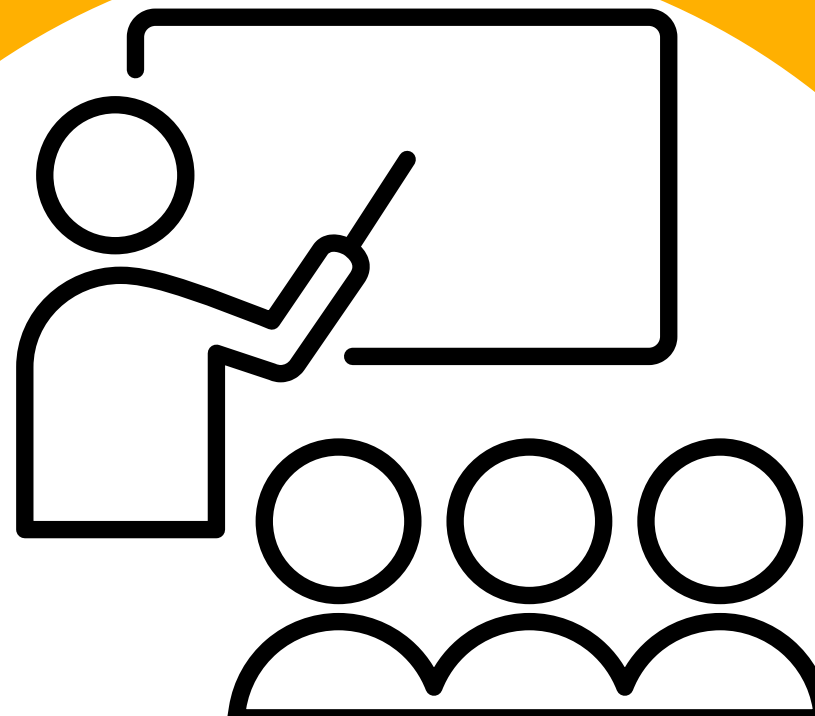


**Step 4 : Register for
concentration and
complete Unit 7
Online prior to
attending
concentration
classroom sessions**



**Step 5: Complete
online sessions prior
to attending
concentration
classroom sessions.**

FSW Training Overview for New Staff



Training Categories

Foundations

1

CHRIS O&N
(Classroom Prerequisite)

Unit 1
(Online Prerequisite)

Unit 2-6
(Online & Classroom)



Concentrations

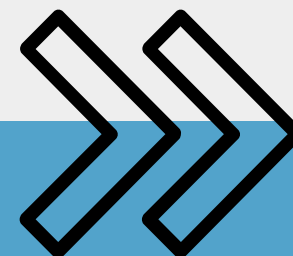
2

Unit 7
(Online Prerequisite)

Unit 8 - Investigations
(Online & Classroom)

Unit 9 - In-Home
(Online & Classroom)

Unit 10 - Out-of-Home
(Online & Classroom)



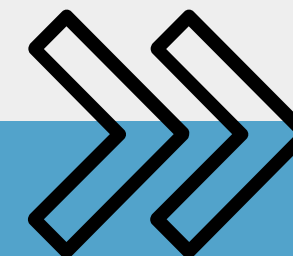
Specialty

3

Supervisor
(Classroom Only)

PA
(Classroom Only)

Extra Help
(Online & Classroom)



Training Roadmap to Success



Green: Time to Go:

You've registered for training and are ready to start the learning journey.
Welcome aboard!



Yellow: Yield for policy.

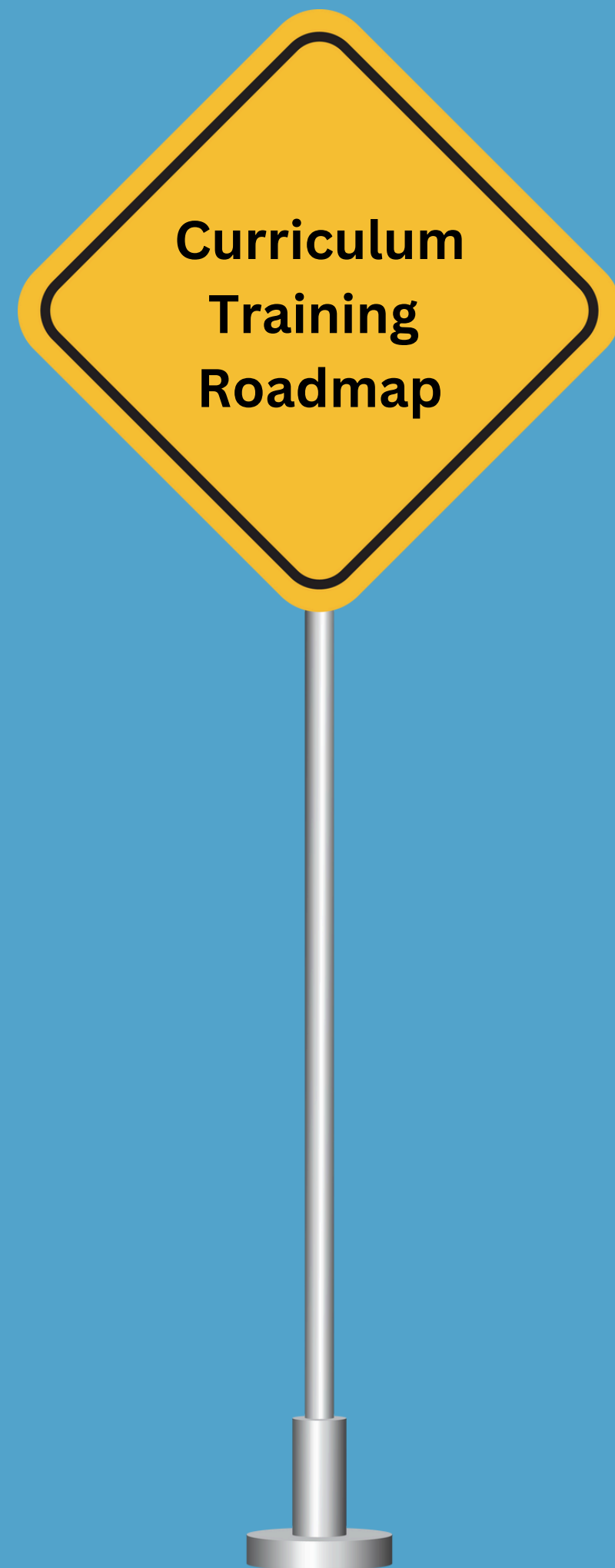
Policy is heavily covered in online units.
It's important to slow down as you cruise through each unit to prepare for classroom sessions.



Red: Stop and Cheer

Congratulations! You've completed all training requirements. You have arrived at your first destination, but remember to never stop learning.





Foundations: Unit 1 (Online Prerequisite)
CHRIS O & N (Classroom Prerequisite)



Foundations: Unit 2-6
(Online & Classroom)

Concentrations: Unit 7
(Online Prerequisite)

Concentrations Unit 8-10
(Classroom & Online)

- Unit 8 - Investigations
- Unit 9 - In-Home
- Unit 10 - Out-of-Home

OR

Specialty Trainings:

- Supervisor
- Program Assistant
- Extra Help

