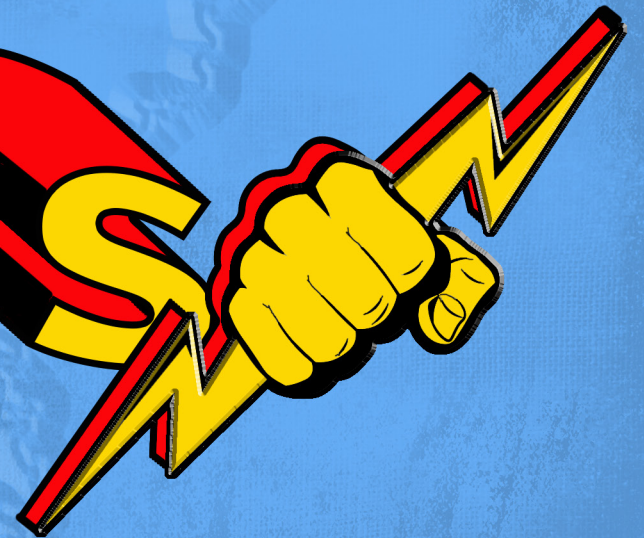


2018 ARKANSAS CONFERENCE
ON CHILD ABUSE & NEGLECT

THE

POWER

OF US



#ARHEROES

GENERAL INFORMATION

The 2018 Arkansas Conference on Child Abuse and Neglect will be held October 10-12, 2018 at the Hot Springs Convention Center, Hot Springs, Arkansas. For updates to workshops, please visit the MidSOUTH webpage (www.midsouth.ualr.edu) or the Arkansas Conference on Child Abuse and Neglect Facebook page.

Hotel Accommodations:

The conference will be at the Hot Springs Convention Center. The conference hotels will be The Hotel Hot Springs, which is connected to the Convention Center and The Waters Hotel which is a couple of blocks from the Convention Center. The conference rates per night are: \$104 + tax - single, \$114+ tax -double, \$124 + tax - triple and \$134+ tax-quad. When making hotel reservations, please identify yourself as a conference participant. You must make your hotel reservations by **September 17, 2018** to get the conference rate.

The Hotel Hot Springs
305 Malvern Ave.
Hot Springs National Park, Arkansas 71901
(877) 623-6697

The Waters
340 Central Ave
Hot Springs National Park, Arkansas 71901
(501) 321-0001

Registration Information:

Registration fees cover entrance to all workshops, conference handouts, welcoming reception, certificate of attendance and transcript (if requested). Register by September 17, 2018 to qualify for the early registration discount. Online registration is available on our website. Registration Fees:

\$190 - Early Registration - Before or on September 17, 2018
\$220 - Registration Fee - After September 17, 2018
\$160 - 5 or More from the Same Organization
\$110 - 1 Day Rate
\$75 - Student Rate



Are you interested in sponsoring or having an exhibit at our conference? Call 501-859-8339 or contact Robin Wilson at rlwilson@midsouth.ualr.edu.

Continuing Education:

Conference organizers are seeking approval for 15 hours of continuing education, from the following organizations: National Association of Social Workers (NASW), Traveling Arkansas' Professional Pathways (TAPP), Arkansas Department of Education (ADE), Arkansas Continuing Legal Education Board (CLE), and Commission on Law Enforcement Standards and Training Standards Office (CLEST). The Arkansas Board of Examiners in Counseling and the Arkansas Psychology Board do not give prior approval; conference hours have always been accepted by both boards.

For Additional Information Contact:

Robin Wilson, Conference Coordinator
(501) 859-8339 or Fax (501) 296-1927
Email: rlwilson@midsouth.ualr.edu
visit www.midsouth.ualr.edu

CONFERENCE INFORMATION

WEDNESDAY, OCTOBER 10, 2018

7:00 a.m. - 4:00 p.m.	Registration		
8:30 a.m. - 10:15 a.m.	Keynote: Resiliency 101: From Victim to Survivor Julie Brand, M.S., CAPER Consulting		
10:30 a.m. - 12:00 p.m.	The Best Kept Secret: Mother-Daughter Sexual Abuse Julie Brand	How the Crime Lab Processes Evidence Lisa Channell, Arkansas State Crime Laboratory	Stewards of Children Sherri Jo McLemore, Arkansas Division of Children and Family Services and Doniece Allen, U of A Little Rock, MidSOUTH
Concurrent Sessions	Cabot Junior Police Academy-Connecting with Kids and Your Community John Dodd, Sergeant, Cabot Police Department and Robby Gibson, Lieutenant, Cabot Police Department	Youth Advisory Board Youth Advisory Board Members	
12:00 p.m. - 1:15 p.m.	Lunch (On Your Own)		
1:15 p.m. - 2:45 p.m.	What About Our Boys? Understanding the Challenges Facing Male Victims of Sexual Abuse and Assault Julie Brand	Medical Evaluation of Child Sexual Abuse: Why can't we be more like CSI? Karen Farst, MD, Arkansas Children's Hospital	Preventing the Re-Traumatization of Children from Addicted Families (Part 1) Susan Bratcher, LCSW, ACADC, CCDP-D, QMRP, Central Arkansas Veterans Healthcare System
Concurrent Sessions	Criminal Prosecution in Child Abuse Cases Michael Wright, JD, Pulaski County Prosecutor's Office and Jeanna Sherrill, JD, Pulaski County Prosecutor's Office	Situational Awareness and Safety Tactics (Part 1) Liz Chapman, Corporal, Arkansas State Police and Brenda Stephenson, Corporal, Arkansas State Police	
2:45 p.m. - 3:15 p.m.	Break - Exhibitor Expo		
3:15 p.m. - 4:45 p.m.	A Close-up Look at Female Sex Offenders in Positions of Trust Julie Brand	Accidental vs. Abusive Head Trauma Karen Farst	Preventing the Re-Traumatization of Children from Addicted Families (Part 2) Susan Bratcher
Concurrent Sessions	Using Technology to Bridge the Gap Between Service Provider and Client, Powered by the Good Grid Emiley Bee, LMSW, Good Grid	Situational Awareness and Safety Tactics (Part 2) Liz Chapman and Brenda Stephenson	

CONFERENCE INFORMATION

THURSDAY, OCTOBER 11, 2018

7:00 a.m. - 4:00 p.m.	Registration		
8:30 a.m. - 10:00 am	Drug Trends in AR Dennis Overton, Lieutenant, Arkansas State Police	Cyber Crimes: Protecting Our Children Through Online Investigations Will Jones , JD, Arkansas Attorney General's Office	The Child as a Court Witness: A Psychologist's Perspective Dawn Doray, Psy.D, Doray Psychological Services, PLLC
Concurrent Sessions	Understanding Latino Culture (Part 1) Lisette Yang, Children's Protection Center	Through the Trauma Lens Terena Woodruff, MEd, Cabot Public Schools	
10:15 a.m. - 11:45 a.m.	Parental Alienation "Syndrome": The Most Abused Idea in Child Custody John E.B. Myers, JD, University of the Pacific, McGeorge School of Law	Using Electronic Evidence to Solve Crimes Against Children Will Jones	Child Death Review as an Injury Prevention Strategy Dawn Porter, Arkansas Children's Hospital and Hope Mullins, MPH, Arkansas Children's Hospital
Concurrent Sessions	Understanding Latino Culture (Part 2) Lisette Yang	Intention- Finding a Life More Remarkable Matthew Knight, LPC, Mid-South Health Systems	
12:00 p.m. - 1:15 p.m.	Lunch (On Your Own)		
1:15 p.m. - 2:45 p.m.	Allegations of Child Sexual Abuse: Pitfalls and Proof John E.B. Myers	Case Studies in Child Physical Abuse Rachel Clingenpeel, MD, Arkansas Children's Hospital	Safe Sleep: As an example of how to implement injury prevention Beverly Miller, MEd, Arkansas Children's Hospital and Lessa Payne, Arkansas Children's Hospital
Concurrent Sessions	FIRST Response Rita Farrell, Gundersen National Child Protection Training Center	Ethics: Faith, Spirituality, and Mindfulness (Part 1) Matthew Knight	
2:45 p.m. - 3:15 p.m.	Break - Exhibitor Expo		
3:15 p.m. - 4:45 p.m.	The Child in Court John E.B. Myers	The Power of Nurturing Parenting Programs Sharon Long, MS, U of A Little Rock - MidSOUTH	Child Protector: A Smartphone App Decision Tool for Investigative Personnel Liza Murray, MD, Arkansas Children's Hospital
Concurrent Sessions	Advanced FIRST Response Rita Farrell	Ethics: Faith, Spirituality, and Mindfulness (Part 2) Matthew Knight	

CONFERENCE INFORMATION
FRIDAY, OCTOBER 12, 2018

7:30 a.m. - 8:30 a.m.	Registration		
8:30 a.m. - 10:00 a.m.	Positive Deviance Approach to Solve Complex Problems Arvind Singhal, PhD, The University of Texas at El Paso	Question, Persuade, and Refer (QPR) Mandy Thomas, Arkansas Department of Health	Indicators of Criminal Activity and Roadside Interviews Used by Law Enforcement Dennis Overton
Concurrent Sessions	Talking to the Teen Brain Cathy Hagemeyer, MEd, U of A Little Rock - MidSOUTH	Child Exposure to Domestic/Interpersonal Violence: Current Research and Psychological Issues Dawn Doray	
10:15 a.m. - 11:45 a.m.	Closing Session: Positive Deviance to Address Sex Trafficking and Child Abuse Arvind Singhal		



WORKSHOP DESCRIPTIONS

WEDNESDAY, OCTOBER 10, 2018

8:30 a.m. - 10:15 a.m. - Keynote

Keynote: Resiliency 101: From Victim to Survivor

Julie Brand

Some victims of childhood abuse perpetuate the cycle of violence; yet others grow up to be safe, nurturing adults, advocates, therapists, physicians and police officers. Why do some victims lose decades of their lives to drug addiction and other self-destructive behaviors while others turn out to be healthy, stable, well-functioning adults? How can we influence which path they will follow?

This dynamic, upbeat program identifies seven key steps that can help victims to overcome trauma and to develop a “survivor’s perspective.” Attendees will learn how to use the “language of resiliency” to identify and to reinforce victims’ strengths thereby positively impacting both their self-perceptions and their life scripts. Participants will learn how to foster resiliency in their clients’ lives and also in their own.

The presenter is both an experienced counselor and a resilient survivor of maternal sexual abuse.

10:30 a.m. - 12:00 p.m. - Concurrent Sessions

The Best Kept Secret: Mother-Daughter Sexual Abuse

Julie Brand

Mother-daughter sexual abuse is especially under-recognized, under-researched and under-reported. This workshop describes the complex mother-daughter incestuous relationship—the subtle, yet intentional violations of normal mother-child boundaries, covert and overt abuse and the psychological manipulations used to silence victims. Attendees will learn ways to include mothers as potential perpetrators in prevention programs and in sexual abuse investigations. Six key therapeutic issues for recovery will be identified. The presenter is both an experienced counselor and a resilient survivor of maternal sexual abuse.

How the Crime Lab Processes Evidence

Lisa Channell

This workshop will cover evidence items that should be obtained in a Sexual Assault Evidence Collection Kit. The analyses performed at the Arkansas State Crime Laboratory will be discussed as well as the capabilities and limitations of forensic science.

Cabot Junior Police Academy - Connecting with Kids and Your Community

John Dobbs and Robert Gibson

The Cabot Police Department Junior Police Academy program graduated its first class in 2017. The program includes a week long academy, a Special Needs Junior Police Academy Day Camp program, and a Junior Police Academy Alumni Association. This workshop will explain the purpose and mission behind the academy and its three distinct programs.

Youth Advisory Board

Youth Advisory Board Members

A panel of current foster youth will discuss the strengths/failures of services delivered to their families based on their own experiences, discuss the importance of helping youth develop stable and permanent connections to caring adults, and will spend time answering questions from the audience.

Stewards of Children

Sherri Jo McLemore and Doniece Allen

This workshop will provide an overview of the Stewards of Children program - a statewide initiative to prevent child sexual abuse. Participants will learn about the prevalence of child sexual abuse in Arkansas and the five steps for protecting children. Participants will also learn how they can bring the Stewards of Children program to their community at no cost and how they can become a trained facilitator for the program.

1:15 p.m. - 2:45 p.m. - Concurrent Sessions

Criminal Prosecution in Child Abuse Cases

Michael Wright and Jeanna Sherrill

The presentation will explore how child abuse reports progress from the Hotline to the courtroom, including the factors and decisions that dictate whether reports result in criminal prosecution. It will also cover an overview of relevant Arkansas statutes, punishment options and ranges, evidentiary and practical challenges of prosecuting child abuse cases, and what to expect if called as a witness.

Medical Evaluation of Child Sexual Abuse: Why can't we be more like CSI?

Karen Farst

The indications for referral for a medical evaluation for suspected sexual abuse will be reviewed by a child abuse pediatrician. Specific emphasis will be given to the reasons why physical findings are often absent in cases of child sexual abuse and the dynamics that can impact disclosures by children.

What About Our Boys? Understanding the Challenges Facing Male Victims of Sexual Abuse and Assault

Julie Brand

Society is still in denial that males can even be victims of sexual assault (especially by female offenders). This ignorance prevents boys from self-disclosing and keeps mandated reporters from reporting sex crimes involving male victims. Ignorance and minimization of the problem impede victims' opportunities for rescue and recovery. In this program we'll discuss male sexual victimization, the unique challenges men face, and the myths that keep victims silent. We'll examine the stats and facts and how the Adverse Childhood Experiences (ACE) Study finally validates what many professionals have long believed about the frequency and the resulting trauma of male sexual victimization.

Situational Awareness and Safety Tactics (Part 1)

Liz Chapman and Brenda Stephenson

This workshop will explore the ways in which home / family visits can become volatile, and ways to combat the dangers of the situation. We will go into detail on the safety concerns you face when entering a home, and the communication techniques you can use to defuse the problem. A few of the topics covered will be: confrontational persons, Arkansas use of force laws, and the principles of survival.

Preventing the Re-Traumatization of Children from Addicted Families (Part 1)

Susan Bratcher

Children from addicted families are often traumatized by their experiences. Effective support can offer opportunity for growth while preventing possible re-traumatization for those children through healing strategies and safe environments. These strategies and building safe environments will be the primary focus of these workshops.

3:15 p.m. - 4:45 p.m. - Concurrent Sessions

A Close-up Look at Female Sex Offenders in Positions of Trust

Julie Brand

We have been slow to acknowledge that some women, working in positions of trust, sexually abuse children. This workshop examines recent cases of female teachers found guilty of child sexual abuse. It explores the dynamics of their teacher-student “relationships” and reveals ways that the gender of the perpetrator impacts victim disclosures, the reporting of sex crimes, arrests, public response, prosecution and sentencing. An interview with an archetypal convicted female sex offender offers insights into the sexual abuse of adolescent males by female adult perpetrators. We’ll identify unique challenges which male victims face as they work to recover and to heal from such betrayals. Participants will learn proactive strategies for possible prevention and earlier intervention.

Accidental vs. Abusive Head Trauma

Karen Farst

Children frequently present for medical care following injuries that involve trauma to the head. Events causing head trauma in children can range from mild to severe. The majority of head trauma cases in children are caused by accidents. A child abuse pediatrician will provide case-based scenarios to highlight the features that often distinguish an accidental vs. abusive case of head trauma in young children.

Using Technology to Bridge the Gap Between Service Provider and Client, Powered by the Good Grid

Emiley Bee

The Good Grid (TGG) is a collaborative community tool used to connect service providers and clients and help clients easily search for available resources. The Good Grid has created an innovative designated space to foster collaboration and connection between service providers and clients. Instead of duplicating current connectivity initiatives across agencies and providers, TGG allows service providers working for various agencies to work effectively as a team to share resources and experiences and ultimately assist program participants in a streamlined manner. It also includes a client portal where clients can log in and assume responsibility for their success by working with service providers to identify their needs all on one platform. This platform addresses the standard hurdles of resistance from various entities to be on one connected system by incentivizing them with a valuable social networking platform where they can recruit and manage volunteers, post and sell event tickets, crowdfund, and perform other functions that are traditionally fee-based free of charge on TGG.

Situational Awareness and Safety Tactics (Part 2)

Liz Chapman and Brenda Stephenson

This workshop will explore the ways in which home / family visits can become volatile, and ways to combat the dangers of the situation. We will go into detail on the safety concerns you face when entering a home, and the communication techniques you can use to defuse the problem. A few of the topics covered will be: confrontational persons, Arkansas use of force laws, and the principles of survival.

Preventing the Re-Traumatization of Children from Addicted Families (Part 2)

Susan Bratcher

Children from addicted families are often traumatized by their experiences. Effective support can offer opportunity for growth while preventing possible re-traumatization for those children through healing strategies and safe environments. These strategies and building safe environments will be the primary focus of these workshops.

WORKSHOP DESCRIPTIONS

THURSDAY, OCTOBER 11, 2018

8:30 a.m. - 10:00 a.m. - Concurrent Sessions

Cyber Crimes: Protecting Our Children Through Online Investigations

Will Jones

The internet has opened up a world of opportunity. Unfortunately it has also created unlimited openings for those who wish to do harm to our children. This presentation will explore the basics of online investigations conducted by the Attorney General's Cyber Crimes Unit and steps we can all take to make our children safer.

Through the Trauma Lens

Terena Woodruff

What is trauma? What are the effects? How do we move from trauma aware to trauma informed? See the possibilities for children when we begin to look through the lenses of trauma and resilience. Examine one school district's journey to work with community resources and systems to support children who have experienced trauma.

The Child as a Court Witness: A Psychologist's Perspective

Dawn Doray

This presentation will address general guidelines for interviewing a child related to court matters and how to improve a child's performance during testimony. In addition, guidelines for talking with children in preparing them to testify will be discussed. The following also will be addressed in this interactive presentation: explaining ground rules for children to testify; understanding the Truth vs. Lies ceremony; understanding child's language and being aware of language used when questioning a child; and identifying types of questioning including open-ended vs specific, misleading, and suggestive questions.

Understanding Latino Culture (Part 1)

Lisette Yang

As the immigrant population continues to grow, especially the Latino/Hispanic one, it is important to understand their culture, family dynamics, traditions and all aspects that influence their behavior and presence in the US. This training also covers services they are not eligible for as well as those available to them such as Protection visas for any immigrant victim of a crime. Finally, the presenter provides a direct personal perspective based on personal experiences as an immigrant herself living in Arkansas, as well as with the 13+ years' interacting and working with immigrant victims in the state.

Drug Mule and Human Trafficking Trends on Arkansas Highways

Dennis Overton

This workshop session will focus on providing information about current drugs that impact children, families, and communities of Arkansas with particular emphasis on what is happening in the state regarding methamphetamine use/production; how the opioid epidemic is impacting Arkansas; and efforts to combat marijuana that is produced and trafficked into and through Arkansas.

10:15 a.m. - 11:45 a.m. - Concurrent Sessions

Intention – Finding a Life More Remarkable

Matthew Knight

This workshop goes beyond setting goals, although to have a healthy set of goals is important for success and happiness. This is self care from a mindfulness vantage point. For those who attend, the questions become deeper. “What do I want my life to be, to mean? Am I dying with my dreams still in me? Am I settling, compromising for less? What do I need for my life to be its best? What is standing in my way of the happiness I want for my life? Can the things I purpose, I desire most deeply become realities?” They can. Come take a remarkable journey into the world of intention. You can have a more positive abundant way of living, a better sense of self control, make more successful choices, let go of things you need no longer carry. This is self care at its most powerful. Highly interactive, rewarding, and fun.

Using Electronic Evidence to Solve Crimes Against Children

Will Jones

Today’s child communicates electronically more than ever before. This presentation will discuss ways that investigators can use these communications to solve cases and strengthen prosecutions. We will focus on mobile devices and social media.

Child Death Review as an Injury Prevention Strategy

Dawn Porter and Hope Mullins

Infant and Child Death Review: Unintentional injuries are a leading cause of death in children 1-18 years old. The Infant and Child Death Review Program is comprised of multi-disciplinary teams that review unexpected deaths in children under 18 years of age. Injury prevention recommendations are identified based on risk factors discovered at child death reviews. Participants will learn the basics of the Arkansas Infant and Child Death Review Program. They will develop an understanding of the principles and practices of injury prevention, which can be tailored to all demographics in a community.

Understanding Latino Culture (Part 2)

Lisette Yang

As the immigrant population continues to grow, especially the Latino/Hispanic one, it is important to understand their culture, family dynamics, traditions and all aspects that influence their behavior and presence in the US. This training also covers services they are not eligible for as well as those available to them such as Protection visas for any immigrant victim of a crime. Finally, the presenter provides a direct personal perspective based on personal experiences as an immigrant herself living in Arkansas, as well as with the 13+ years’ interacting and working with immigrant victims in the state.

Parental Alienation “Syndrome”: The Most Abused Idea in Child Custody

John E. B. Myers

Anyone who works in family law or child protection knows from experience that some parents alienate children from other parents. Of course, proving deliberate alienation is not easy. This workshop addresses whether so-called “Parental Alienation Syndrome” or “Attachment-Based Parental Alienation” help in the search for truth. Spoiler alert: The answer is NO.

1:15 p.m. - 2:45 p.m. - Concurrent Sessions

Ethics: Faith, Spirituality, and Mindfulness (Part 1)

Matt Knight

As providers, we will all agree that we can not assert our beliefs, especially those of a spiritual nature, on our clients. However, the influence of our spiritual beliefs and practices on our work is perhaps greater than we think.

We are our beliefs. We make them and then they make us. Spiritual beliefs are most powerful. For most, they are the basis of ethical behavior. Our ethical standards have their base in spirituality. In researching topics like mindfulness, happiness, positivity you will always find the importance of faith. Awareness of our own spirituality –its place and influence in our lives and the role it plays in our ethical behavior- is critical in helping our clients deal with their spirituality.

There is a rising percentage of clients who want their spirituality to be part of their therapy. Issues of faith are woven through the issues that bring them to counseling. I have not found much in the way of training on this subject. This training is designed for you to do personal spiritual evaluation, to consider a variety of faiths as well as ideas from various spiritual teachers, and to apply this information to your practice. Very interactive, insightful.

Allegations of Child Sexual Abuse: Pitfalls and Proof

John E.B. Myers

This workshop covers the difficult issue of proving allegations of sexual abuse in the young child. The session addresses dilemmas of proof in criminal cases, child protection proceedings in juvenile court, and allegations of sexual abuse that arise in child custody litigation in family court.

Case Studies in Child Physical Abuse

Rachel Clingenpeel

This session will review various medical aspects of child physical abuse via the use of case examples. In another session at the conference, Dr. Farst will be giving a dedicated talk on head trauma, so this session will focus on other types of abusive injuries such as bruises, burns, and fractures. We will review different ways physical abuse may present, medical conditions which may mimic abusive injuries, the medical evaluation process for possible abuse, and associated problems to watch out for.

First Response

Rita Farrell

Protecting children from child abuse and maltreatment requires that everyone understand how to recognize, respond and report any form of maltreatment a child may endure. Our FIRST response is often the single most important step in effectively responding and reporting maltreatment. Gundersen National Child Protection Training Center has developed a process, called FIRST, that will give your community the tools necessary to better protect kids. The FIRST process teaches three critical components: How to recognize signs and symptoms of abuse and maltreatment; How to listen and respond to a child's needs; How to effectively and accurately report any form of maltreatment to authorities. Whether you are a teacher, counselor, youth group leader, student, church employee, day care worker, mandated reporter, law enforcement patrol officer, EMT, health emergency room responder or investigator, FIRST teaches participants how to listen to children who have experienced maltreatment and gather the correct information needed in a way that puts the child's needs FIRST! Together, with FIRST, we can work to help end child abuse!

Safe Sleep: As an Example of How to Implement Injury Prevention

Beverly Miller and Lessa Payne

Three out of five child deaths in Arkansas happen before the child's 1st birthday. Participants will learn how Arkansas Children's Hospital is responding to this need through policy changes, education, outreach and collaboration with other organizations to reduce sleep related risks.

3:15 p.m. - 4:45 p.m. - Concurrent Sessions

Ethics: Faith, Spirituality, and Mindfulness (Part 2)

Matt Knight

As providers, we will all agree that we can not assert our beliefs, especially those of a spiritual nature, on our clients. However, the influence of our spiritual beliefs and practices on our work is perhaps greater than we think.

We are our beliefs. We make them and then they make us. Spiritual beliefs are most powerful. For most, they are the basis of ethical behavior. Our ethical standards have their base in spirituality. In researching topics like mindfulness, happiness, positivity you will always find the importance of faith. Awareness of our own spirituality –its place and influence in our lives and the role it plays in our ethical behavior- is critical in helping our clients deal with their spirituality.

There is a rising percentage of clients who want their spirituality to be part of their therapy. Issues of faith are woven through the issues that bring them to counseling. I have not found much in the way of training on this subject. This training is designed for you to do personal spiritual evaluation, to consider a variety of faiths as well as ideas from various spiritual teachers, and to apply this information to your practice. Very interactive, insightful.

Child Protector: A Smartphone App Decision Tool for Investigative Personnel

Liza Murray

Determining the likelihood of abuse based on various injuries and determining the need for additional medical workup of an abused child can be difficult. A child abuse pediatrician will review a smartphone app developed by child abuse pediatricians to assist anyone involved in the evaluation and investigation of an injured child. Utilizing case-based learning and participant utilization of the app, the presenter will provide step by step instructions on how to use this technology to help facilitate evidence-based decisions in the investigation of physical abuse.

Advanced FIRST Response

Rita Farrell

The presentation will provide the group practice opportunities with scenarios to work through utilizing the FIRST process. In addition, participants will have an opportunity to conduct a FIRST response interview.

The Child in Court

John E. B. Myers

This workshop addresses children as witnesses in criminal and civil court. Is testifying traumatic for children? Are children competent to testify? Do they understand the difference between truth and falsehood?

The Power of Nurturing Parenting Programs

Sharon Long

This workshop will focus on the rationale and core components of the evidence-based, trauma-informed Nurturing Parenting Program -- developed more than 30 years ago by Dr. Stephen Bavolek, an internationally recognized leader in the field of child abuse prevention and treatment. This session will include a brief overview of the research that supports the positive effects of living in a nurturing environment as well as the exploration of each of the five constructs that serves as the program framework. Utilizing this framework, we will examine several concrete ways to work with families to create more nurturing lifestyles.

WORKSHOP DESCRIPTIONS

FRIDAY, OCTOBER 12, 2018

8:30 a.m. - 10:00 a.m. - Concurrent Sessions

Positive Deviance Approach to Solve Complex Problems

Arvind Singhal

Positive Deviance (PD) is a novel approach to individual, organizational, and social change based on the observation that in every community there exist certain individuals or groups whose uncommon behaviors and strategies enable them to find better solutions to problems than their peers, while having access to the same resources and facing worse challenges. The PD approach has been employed in over 40 countries to address a wide variety of social and organizational problems, including decreasing malnutrition and infant and maternal mortality, and reducing hospital-acquired infections.

Question, Persuade, and Refer (QPR)

Mandy Thomas

QPR stands for Question, Persuade, and Refer — the three simple steps anyone can learn to help save a life from suicide. Just as people trained in CPR and the Heimlich maneuver help save thousands of lives each year, people trained in QPR learn how to recognize the warning signs of a suicide crisis and how to question, persuade, and refer someone to help. QPR is an emergency mental health intervention for suicidal persons created in 1995 by Paul Quinnett. An abbreviation for Question, Persuade and Refer, the intent is also to identify and interrupt the crisis and direct that person to the proper care.

Indicators of Criminal Activity and Roadside Interviews Used by Law Enforcement

Dennis Overton

This session will discuss topics involving the importance of indicators of criminal activity and how officers recognize them. Those indicators consist of Interior and Exterior Vehicle indicators as well as People and Driving Indicators. The roadside interview and the appropriate or inappropriate response to a simple question that is asked of a driver and/or passenger can make the difference in whether or not an officer extends the traffic stop to look more in depth at the legitimacy of the trip.

Talking to the Teen Brain

Cathy Hagemeyer

You may have survived the terrible twos and elementary school years with your sanity intact; however, when your darling child (or someone else's child) transforms into a moody and mouthy teenager, it's enough to drive you crazy.

This interactive workshop will review the latest research on the teen brain relevant to communication, discuss how gender differences apply to talking with adolescents, and explore strategies for effectively communicating with teenagers.

Child Exposure to Domestic/Interpersonal Violence: Current Research and Psychological Issues

Dawn Doray

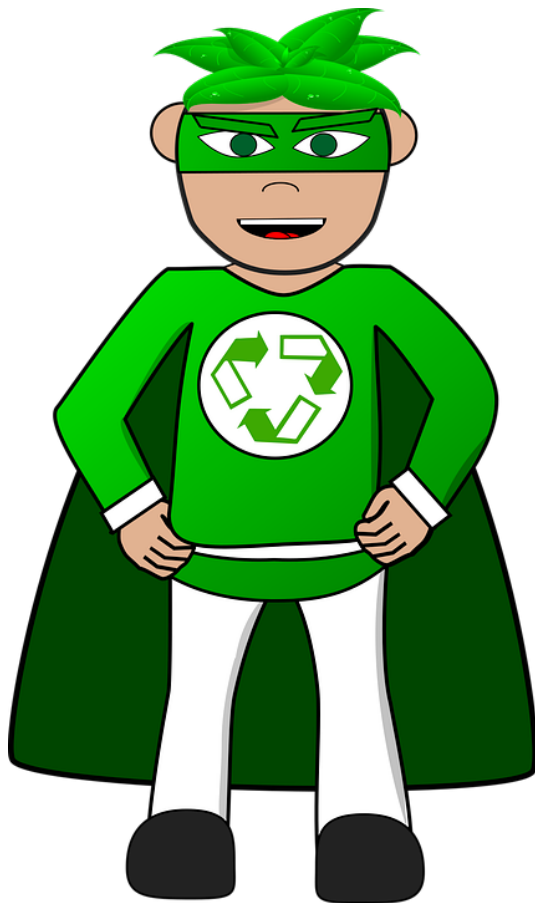
This workshop will explore the effects of exposure to domestic/interpersonal violence on children beyond the basics. A review of the recent research trends including data and statistics as well as a discussion of the correlation between child maltreatment and exposure to domestic violence will be addressed. Psychological issues related to symptoms in children, related diagnoses, and treatment interventions also will be discussed.

10:15 a.m. - 11:45 a.m. - Closing Session

Positive Deviance to Address Sex Trafficking and Child Abuse

Arvind Singhal

In this workshop, we focus on the value of applying the Positive Deviance (PD) problem solving approach to address child abuse, child neglect, and sex trafficking.



The ACCAN Conference has GONE GREEN!

Help us get the word out and stay up-to-date on conference information:

Like and share our facebook page - **Arkansas Conference on Child Abuse and Neglect**

Follow us on Twitter @2018ACCAN



SPEAKER INFORMATION

Allen, Doniece

Doniece (Niecy) Allen is the Contracts Administrative Data Specialist with MidSOUTH. In this role, Niecy works with the Nurturing Families of Arkansas and Stewards of Children teams. She is responsible for organizing and scheduling statewide training, ensuring fidelity of training, and managing and maintaining the databases chosen for contracts.

Bee, Emiley

Emiley Bee studied psychology at Arkansas Tech University and Social Work at the University of Arkansas at Little Rock. While in graduate school, Emiley worked as a mental health technician at Pinnacle Pointe Behavioral Healthcare System as well as interning in the Women's Clinic of the Little Rock VA Hospital. There she served on the front lines of implementing and evaluating programs for women Veterans. Passionate about creating a better community, Emiley found a good fit in her current position as a Program Manager for the Good Grid, a one-stop ecosystem for delivering services to reduce the cycle of crime, poverty and recidivism in the State of Arkansas. As a Licensed Master of Social Work, Emiley specializes in cultivating relationships with community organizations as well as writing proposals to expand the Good Grid program within Arkansas and surrounding states. She is currently one of 34 students selected for the inaugural class of the Executive Master of Public Service program at the Clinton School of Public Service.

Brand, Julie

Julie Brand holds a Master's degree in Counseling and enjoyed a distinguished 25-year career as a school counselor. Now she uses her unique perspective as both counselor and survivor, to speak and to write about maternal incest. She combines research data, professional insights and her personal experiences to enlighten audiences about the reality of mother-daughter sexual abuse. In 2006, she founded CAPER Consulting (Child Abuse Prevention, Education and Recovery) dedicated to confronting the subject of mother-child sexual abuse. She published *A Mother's Touch: Surviving Mother-Daughter Sexual Abuse*, in 2007. Since 2005, she has educated and empowered audiences across the United States with her dynamic programs on maternal incest, female offenders in positions of trust and the opportunities for recovery from childhood trauma. Her audiences include victim advocates, social workers, law enforcement, medical professionals, attorneys, CASAs, child advocates, mental health professionals, victim services administrators and always, of course, the many professionals who are themselves survivors of childhood trauma. Her resiliency workshop offers proven strategies for helping victims of childhood maltreatment and interpersonal violence to become strong, healthy survivors. Julie's upbeat presentations focus on the power of resiliency and healing in all of our lives.

In addition to numerous regional and state conferences, she is a frequent presenter at the annual August Crimes Against Children Conference in Dallas, Texas and at the National Children's Advocacy Center Symposium in Huntsville, Alabama. She has conducted full day trainings for the Child Abuse Training and Coordination Program within the Family Support and Prevention Service of the Oklahoma State Department of Health, the Orange County, California Probation Department and the California Child Abuse Training and Technical Assistance Center of the Center for Innovation and Resources, Inc. Julie and her work are also featured in a 2013 Canadian documentary on mother-daughter sexual abuse, entitled "It Was A Woman." In January 2017, Julie testified as an expert witness on mother-daughter sexual abuse in Colorado District Court, aiding in the successful criminal prosecution and sentencing of the defendant.

Bratcher, Susan

Susan Rae Bratcher, LCSW, ACADC, CCDP-D, QMRP, has over 17 years of experience in mental health and over 11 years in teaching at the college level. She is a clinical social worker at the Central Arkansas Veterans Healthcare System. She has been a clinical instructor at the University of Central Arkansas in the Addiction Studies program and an adjunct instructor at the University of Arkansas at Little Rock in the sociology department.

Channell, Lisa

Lisa Channell supervises and works alongside 14 Serologists and four Trace Evidence Analysts in the forensic disciplines of body fluid identification and sample preparation for DNA analysis as well as the trace evidence analyses of items such as glass, hair, paint, ignitable liquids, gunshot residue, fibers, tape, etc.

Lisa helped create the Sexual Assault Evidence Collection Kit for the state of Arkansas in 1985. She educates hospital staff across the state on the proper collection procedures for these types of exams. Lisa has been appointed by the Governor to the Arkansas Commission on Child Abuse, Rape and Domestic Violence since its creation in 1993 and prior to that was the Chairman of the Governor's Task Force on Rape since 1982. Lisa has trained law enforcement officers, prosecutors, rape victim advocates, judges and medical personnel across the state in rape evidence collection.

Chapman, Liz

Corporal Chapman is a 12 year veteran of law enforcement. She began her law enforcement career as an officer with the Sand Springs Police Department (PD) in Sand Springs, Oklahoma after graduating with a Bachelors Degree from Drury University in Missouri in 2006. While working at Sand Springs PD, Corporal Chapman began learning she had strengths in negotiation techniques and completed the 80 hours of training in Mental Health Negotiation for Law Enforcement. Soon Chapman became Sand Springs PD's sole mental health negotiator. After an injury in the line of duty, Corporal Chapman moved home to Little Rock to be closer to family.

After moving back home and joining the Arkansas State Police (ASP), Corporal Chapman knew she wanted to continue the path of negotiation and was selected as a member of the ASP's Crisis Negotiation Team. Corporal Chapman holds instructor certifications in General Law Enforcement, Emergency Vehicle Operations, Standardized Field Sobriety Testing, and Firearms.

In 2015, Corporal Chapman moved into the Public Affairs Office, where she is currently assigned. Corporal Chapman supervises the ASP's social media platforms and coordinates community relations events, interviews, and media releases throughout the state. She also functions as one of the department's Public Information Officers.

Clingenpeel, Rachel

Rachel Clingenpeel, M.D., received her Bachelor of Science from Duke University in 1998 in psychology and biology with a certificate in neuroscience. She then completed a two year post-baccalaureate research program at the National Institutes of Health before attending medical school at the University of Virginia, from which she graduated in 2004. She completed her pediatric residency training and chief residency at Tulane University in New Orleans, and fellowship in Child Abuse Pediatrics at Brown University in Providence, Rhode Island. Dr. Clingenpeel joined the faculty at University of Arkansas for Medical Sciences in fall 2012. Dr. Clingenpeel is pleased to be a part of the Center for Children at Risk at Arkansas Children's Hospital, where her duties include inpatient and outpatient evaluation of suspected child abuse and neglect, collaboration with the Children's Advocacy Centers of Arkansas in child abuse evaluation, and education of other health care providers as well as community partners regarding all aspects of child abuse and neglect. Her particular interests include optimizing short- and long-term multidisciplinary treatment of traumatized children.

Dobbs, John

Sgt. John Dodd started his career in law enforcement in 2007. He has worked as a Patrol Officer, Field Training Officer, School Resource Officer, and is a certified Crisis Negotiator. He is currently assigned as the Sergeant for the Cabot Police Department School Resource Officer Program. He teaches the PRiDE (Panthers Resisting Drugs Education) Program to the Cabot School District 5th graders and created the annual Cabot PD 4th grade art and calendar contest that benefits COPS Toy Patrol, our charity Christmas program. He spearheaded the creation of the Cabot PD Junior

Police Academy Program, where he serves as the lead instructor, and also organizes the Special Needs JPA Day Camp and the Cabot JPA Alumni Association. Sgt. Dodd has been named Cabot PD Officer of the Year, Officer of the Quarter, and the City of Cabot Employee of the Month. In 2017 he was awarded Lonoke County Officer of the Year by the Arkansas Attorney General's Office. He is a Cabot Middle School North Stakeholder volunteer and former member of the Cabot School District Child Find committee. He also participates in the yearly Special Olympics Polar Plunge. Outside of work, Sgt. Dodd sits on the Board of Directors for two non-profit organizations who serve individuals and families with disabilities, the Arkansas Autism Research and Outreach Center and Building Bridges, Inc. Sgt. Dodd is married and he and his wife, Tiffany, have one daughter. They participate in the annual Arkansas Autism Speaks walk and he was the Honorary Chair for the 2015 walk for winning the national Autism Speaks shirt design that year. Sgt. Dodd also had the winning design for the State of Arkansas Autism Awareness license plate. He is a member of Renew Community Church in Cabot and volunteers with their Reliant Kids Sunday school classes and weekly AWANA program. Sgt. Dodd graduated from the University of Arkansas at Little Rock in 2000.

Doray, Dawn

Dawn P. Doray, Psy.D., established a private practice (Doray Psychological Services, PLLC) in July of 2007, now located in Midtown, after serving as an Assistant Professor with the UAMS, College of Medicine, Department of Psychiatry, Child Study Center. She received her doctoral training at Nova Southeastern University and completed her pre-doctoral psychology internship with UAMS, Child Study Center, focusing on trauma issues with children and adolescents. She also completed a post-doctoral position with the Kapi'olani Child Protection Center in Hawaii, conducting psychological evaluations on families involved in dependency and neglect cases. Dr. Doray specializes in the treatment and assessment of children, adolescents, and their families with an interest in trauma and maltreatment issues and divorced/blended families. Throughout the state of Arkansas in the Circuit Courts, Domestic Relations Division, she conducts child custody and psychological evaluations and serves as an expert witness in the court system as well as an expert witness consultant or treating mental health provider. She also provides educational seminars to mental health and court professionals regarding psychological services and consultation. Currently, Dr. Doray is a member of the Association of Family and Conciliation Courts, APA, and ArPA and serves on the Planning Committee for ACCAN.

Farrell, Rita

Rita Farrell has over 18 years of experience working with child abuse investigations as a forensic interviewer and founding Executive Director of a Child Advocacy Center. In her role as chief administrator and fundraiser for the center, Rita admits that her role as a forensic interviewer of child abuse victims is her "true passion". Rita currently serves as the Forensic Interview Specialist of National Child Protection Training Center at Northwest Arkansas Community College. Rita manages the ChildFirst Arkansas program and the development of advanced training courses and programs for forensic interviewers. Rita has conducted more than 1,500 child interviews, testified in many court cases and has trained for the ChildFirst program in Indiana since 2002. She is also a certified law enforcement instructor and has trained at the national level since 2006 on many child abuse related topics and has authored five articles specific to forensic interviewing of child abuse victims. As a public speaker, she continues to champion the cause of child advocacy by addressing local agencies, schools, and universities on child-related topics. Rita was presented with the U.S. Attorney General's award for "Outstanding Service to Victims of Crime" by the U.S. Attorney General of Indiana and is also the recipient of the "Champion for Children" award from the CornerHouse Interagency Child Abuse Evaluation and Training Center in Minneapolis, Minnesota.

Farst, Karen

Karen Farst, M.D., is a pediatrician with the University of Arkansas for Medical Sciences (UAMS), Department of Pediatrics, and Center for Children at Risk. She completed undergraduate and medical school at Texas Tech University and then completed residency in Internal Medicine and Pediatrics at UAMS. After several years of private practice in Rogers, Arkansas, and work with the Benton County Children's Advocacy Center, Dr. Farst completed a fellowship in child abuse medicine at Cincinnati Children's Hospital Medical Center and returned to UAMS in 2004. She now works both as a general pediatrician in the Emergency Department and child abuse pediatrician with the Team for Children at Risk at Arkansas Children's Hospital.

Gibson, Robert

Lt. Robert (Robby) Gibson has been a Law Enforcement Officer for 16 years with the Cabot Police Department. He serves as the Lieutenant over the Criminal Investigation Division, the School Resource Officer program, Warrants and Technical Analyst officer. Lt. Gibson is on the Board of Directors for ASOMA (Arkansas Sex Offender Management Association) and is a member of the Lonoke County Dive and Rescue Team. As a Certified Law Enforcement Instructor, he instructs multiple law enforcement classes including DRE, ARIDE, SFST, Jail Standards, Court Room security, Case File Preparation and Court Room Testimony. He has lengthy experience in homicide, suicide, child abuse and advanced accident investigations and is trained in Biased Based Police Practices, Internal Affairs and Public Integrity Investigations. He is a 2015 Graduate of School of Law Enforcement Supervision (SLES).

Lt. Gibson has numerous awards including the 2014 Morgan's Choice Award presented by Colleen Nick, recipient of an Arkansas Senate Citation, and the 2015 Service Award from MADD for 10 years of service as a DRE. He is active in multiple fundraisers for Arkansas Special Olympics, including the Law Enforcement Torch Run and Polar Plunge. He serves as a committee member for Cabot's C.O.P.S (Cabot Officer's Playing Santa) Toy Patrol and is an instructor and volunteer for Cabot Police Departments Junior Police Academy and Special Needs Police Academy Day Camp. Lt. Gibson is married with 5 kids and 2 grandkids, is a member of New Life Church Cabot and is a Serve Team volunteer and Team Leader. He is also a Gideon with Gideon's International and Secretary of Cabot, camp. He is a Cabot Middle School North Stakeholder volunteer and a member of Chamber of Commerce CabotFest Committee. Lt. Gibson attended college at Pulaski Tech and Arkansas Tech University.

Hagemeier, Cathy

Cathy Hagemeier, M.Ed., has provided new staff training and assisted with curriculum development for twenty-two years at MidSOUTH Training Academy (University of Arkansas at Little Rock-School of Social Work). Before coming to MidSOUTH, Cathy served in the field of child welfare for five years with the Division of Children and Family Services (DHS). She worked as a Family Service Worker and as a trainer for the staff development team. Prior to that, she provided instruction and supervision for the Outward Bound Program for At-Risk Youth in Florida, New Hampshire and Maine. Cathy has also taught biology and coached tennis at a high school in Iowa.

Cathy has presented at several Arkansas state conferences including the CASA Conference, the Foster Parent Conference, the AHSEA Conference, the APEN Conference, the Attorney ad Litem Conference, MidSOUTH Summer School, the Home Visitors Conference and several AR Child Abuse and Neglect Conferences. Nationally, she presented a workshop at the Brain Learning Conference in San Diego, CA.

Besides a Master's Degree in Education, Cathy holds an Arkansas teaching license in biology and is a certified trainer of Active Parenting educators. Her husband is an attorney for the University of Arkansas System Office and together they parent two wonderful daughters. In her spare time, Cathy enjoys swimming, reading, cooking and traveling.

Jones, Will

Mr. Jones is a graduate of Henderson State University and the University of Arkansas School of Law. Will began his career as a prosecutor in 2001 in Crawford County. In May of 2002 he was hired by Sixth Judicial District Prosecuting Attorney Larry Jegley where he spent approximately eight years in the domestic violence and sexual assault unit before becoming division chief over district courts and citizen's complaints. As a prosecutor, Will has tried over 130 jury trials most of which were violent or sexual crimes against children. For the past five years, Will has been an Assistant Attorney General assigned to the Cyber Crimes Unit where he oversees the unit's investigation of child pornography across the state of Arkansas. He has undergone extensive training in technology facilitated crimes and is often appointed as a special prosecutor to handle the Cybercrimes cases that result in an arrest and prosecution. Last year he was named co-chair of the Attorney General's Task Force for the Prevention of Human Trafficking. He is also an adjunct professor at the University of Arkansas at Little Rock and formerly with the UALR Bowen School of Law.

Knight, Matthew

For the last thirteen years, Matthew Knight, LPC, has worked in education, public relations, and marketing for Mid-South Health Systems, an Arkansas Community Mental Health corporation. He develops and provides a variety of training programs for business, industry, and educational groups as well as Mid-South staff. In addition, Matthew handles much of the public relations and marketing in Mid-South's thirteen county area. Prior to his current position, Matthew was director and therapist at Mid-South's Paragould Outpatient Clinic for three years. As a Licensed Professional Counselor, he has thirty years' experience in mental health services, education, and consulting for individuals and businesses in Arkansas, Texas, Tennessee, Mississippi and Missouri. In addition, he has been a junior and senior high public school teacher, the administrator of a private school, started two businesses, written music in Nashville, and traveled extensively. Matthew completed his Bachelor's degree in education at Arkansas State University, a Master's degree in Counseling Psychology and Family Studies at the University of Tennessee, and pursued postgraduate studies in psychology at ASU.

Long, Sharon

Sharon Long, M.S., is the Prevention Team Leader at the Center for Prevention and Training, MidSOUTH, School of Social Work, University of Arkansas-Little Rock. She is currently the programmatic lead for the Nurturing the Families of Arkansas demonstration program in partnership with the Division of Children and Family Services. She has facilitated parenting programs and specialized behavioral health trainings since 1991 and brings extensive experience to the field of prevention. She is a certified trainer in Mental Health First Aid and Building Developmental Assets as well as a wide array of parenting curricula, including Nurturing Parenting Program, Active Parenting, Systematic Training for Effective Parenting, Parenting the Strong-Willed Child, and Strengthening Multi-Ethnic Families and Communities. Her passion is the implementation of programs that equip, support, and nurture families.

McLemore, Sherri Jo

Sherri Jo McLemore is the director of the Arkansas Children's Trust Fund, a program of the Arkansas Division of Children and Family Services that is focused on the primary prevention of child abuse. Sherri Jo has been the director of the program since 1990 and oversees grant awards to multiple statewide initiatives and community-based programs.

Miller, Beverly

Beverly Miller, M.Ed, is the Associate Director at the Injury Prevention Center at Arkansas Children's Hospital. Ms. Miller has over 40 years of experience working in health promotions for high risk populations in numerous public health areas, including substance abuse and violence prevention, cancer control, and injury prevention and control. In addition to working in the academic and pediatric settings, Ms. Miller has experiences working in a non-profit organization, mental health, and public schools. She has worked on a number of injury prevention research studies, including research awards from the Centers for Disease Control and Prevention, Health Services Resources Administration Targeted Issues, the National Highway Traffic Safety administration and a current award from the National Institute of Child and Human Development. Ms. Miller earned a Master's in Education with an emphasis on special education for the severely emotionally disturbed from the University of Arkansas.

Mullins, Hope

Hope Mullins, M.P.H., is the Program Manager for Research and Evaluation at the Injury Prevention Center at Arkansas Children's Hospital. She has worked as a prevention specialist in the injury prevention field for 18 years and helps to develop research protocols, design evaluation plans, and analyze data. Some of her specialties include survey development, focus group moderation, and research compliance. Hope is a Certified Research Specialist and a child passenger safety technician.

Murray, Liza

Liza Murray, M.D., is a Child Abuse Pediatrician and a recent addition to the child abuse team at Arkansas Children's Hospital. She is an Arkansas native, growing up in Little Rock, graduating from UAMS medical school, completing her pediatric residency at Arkansas Children's Hospital in 2011 and working one year as a chief resident and hospitalist at Arkansas Children's Hospital. Liza completed a 3-year fellowship in Child Abuse Pediatrics at Children's Mercy Hospital in Kansas City in August of 2018 and is excited to join the multidisciplinary team back in her home state.

Myers, John E.B.

John is Professor of Law at the University of the Pacific, McGeorge School of Law in Sacramento, California. John is an authority on legal and historical aspects of child maltreatment, intimate partner violence, stalking, sexual assault, elder abuse, family law, and mental health law. John has written or edited 14 books and 146 articles and chapters on subjects related to interpersonal violence. His writing has been cited by more than 200 courts, including the U.S. Supreme Court. John has given more than 400 presentations across the United States and abroad. John represents children in juvenile court dependency proceedings and victims of domestic violence in restraining order trials.

Overton, Dennis

Lieutenant Dennis Overton has been with the Arkansas State Police (ASP) since 1997. Overton serves as the Interstate Criminal Patrol (ICP) Team Coordinator. The ICP team focuses primarily on criminal interdiction on Arkansas Interstate Highways. Since the ICP's inception in 2005, the team has made hundreds of bulk narcotic and currency seizures and team members have been recognized both locally and nationally for their interdiction efforts. Lt. Overton has a Bachelor of Science Degree from Arkansas State University and has completed the Federal Bureau of Investigation Instructor Development Course and is currently a Certified Police Instructor in the State of Arkansas. Lt. Overton is a Field Training Officer and teaches Criminal Interdiction, Traffic Stops and Pursuit Driving during ASP troop schools as well as for current Trooper in-service training. He is currently an instructor for the University of Arkansas Criminal Justice Institute (CJI) teaching Criminal Interdiction to various law enforcement officers throughout Arkansas and has taught numerous trainings within Arkansas and nationally. Lieutenant Overton was awarded official commendations in 2007 and 2008 by the ASP for his efforts in bulk narcotic and cash seizures with the ICP Team and again in 2015 for his work in the recovery of two juvenile females who were victims of human trafficking. In January 2015, Lt. Overton was promoted to the rank of Lieutenant and is currently assigned to the ASP, Highway Patrol Division office at Little Rock headquarters. In addition to his duties with the department, Lt. Overton also serves as Vice President of the Arkansas State Police Association representing the needs and concerns of troopers and retired troopers throughout the state of Arkansas.

Payne, Lessa

Lessa Payne is the Infant Mortality Prevention Coordinator through the Injury Prevention Center at Arkansas Children's Hospital. Lessa earned a BS in Psychology/Sociology from the University of Central Arkansas at Conway and has more than 30 years of experience working in Prevention with at risk youth. Lessa facilitates Safety Baby Shower training across the state and serves on Safe Sleep and Period of Purple Crying Task Force at Arkansas Children's Hospital. Lessa is also a certified Child Passenger Tech and Instructor and maintains the fitting station at the Injury Prevention Center.

Porter, Dawn

Dawn Porter is the Infant and Child Death Review (ICDR) Program Coordinator. She earned a B.S. degree in Health Education at University of Arkansas at Little Rock. She has five years' experience working at the Injury Prevention Center at Arkansas Children's Hospital. She facilitates local ICDR team case review meetings, collaborates with the ICDR Panel on policy and procedure recommendations and with other organizations on injury prevention strategies.

Sherrill, Jeanna

Jeanna Sherrill is the Division Chief of the Domestic Violence/Sexual Assault (DVSA) Unit of the Pulaski County Prosecutor's Office. She has prosecuted a variety of cases, including sexual assault and violent crimes, since starting at the office as a staff attorney in 1999. She first became a Division Chief in 2007 and became the supervising attorney for the DVSA unit in 2011. In this role, she continues to handle complex sexual assault and domestic homicide cases. Ms. Sherrill is an alumna of the University of Arkansas where she graduated cum laude from both its undergraduate program and law school.

Singhal, Arvind

Arvind Singhal, Ph.D., is the Samuel Shirley and Edna Holt Marston Professor and Director of Social Justice Initiative at The University of Texas at El Paso, and appointed (since 2009) as the William J. Clinton Distinguished Fellow, Clinton School of Public Service, University of Arkansas. He teaches and conducts research in the diffusion of innovations, the positive deviance approach, organizing for social change, the entertainment-education strategy, and liberating interactional structures, and his research and outreach spans sectors such as health, education, sustainable development, civic participation, and corporate citizenship. Singhal has authored or edited 13 books, including *Inspiring Change and Saving Lives: The Positive Deviance Way* (2014); *Health Communication in the 21st Century* (2014); *Inviting Everyone: Healing Healthcare through Positive Deviance* (2010); *Protecting Children from Exploitation and Trafficking: Using the Positive Deviance Approach* (2009); *Communication of Innovations* (2006); *Organizing for Social Change* (2006); *Combating AIDS: Communication Strategies in Action* (2003); and *Entertainment-Education: A Communication Strategy for Social Change* (1999); and over 190 peer-reviewed essays in leading journals of communication, public health, and social change.

Singhal is a leading scholar and professor of the positive deviance approach (including three books on the topic and over a dozen case studies and peer-reviewed articles). Further, he has taught courses and implemented workshops on the positive deviance approach for educators, health practitioners, government officials, and business leaders in several countries of the Americas, Europe, Asia, Africa, and Latin America.

Stephenson, Brenda

Corporal Stephenson began her law enforcement career at age eighteen as a jailer/dispatcher for the Polk County Sheriff's Department. In 2002, she transferred to the Pope County 911 Dispatch Center in order to further her education at Arkansas Tech University, where she graduated with a B.S. in 2004. Corporal Stephenson began her career with the Arkansas State Police in January of 2006 and was assigned to the Highway Patrol Division in Troop J.

In 2014, Corporal Stephenson was selected as the Troop Services Officer for Troop J. Her duties include a wide variety of assignments including supervising DL/CDL examiners, the college internship program, and equipment inventory. Corporal Stephenson also coordinates and instructs community oriented policing events (COPPS) throughout her Troop, while still performing highway patrol duties.

Corporal Stephenson serves on the ASP Crisis Negotiation Team and has received an official commendation for her solo negotiating efforts on a barricaded suspect call in 2013. She holds certifications as a Field Training Officer, Law Enforcement Instructor, Firearms Instructor, and Child Passenger Seat Technician.

Thomas, Mandy

In 2014, Mandy Thomas became an Injury and Violence Prevention Project Specialist of the Arkansas Department of Health. When she began her career in the health department, she received training on the top five mechanisms of injury-related death for Arkansas and on how to integrate the public health approach to prevent these deaths from occurring.

From 2014 through early 2017, Mandy was the Motor Vehicle Crash (MVC) Prevention Manager and Rape Prevention and Education (RPE) State Director both located in Injury and Violence Prevention Section. Through both of these positions, she has received numerous hours of certifications and trainings on intimate partner violence, sexual assault, impaired driving, and human trafficking. Mandy was tasked with writing and submitting grants for MVC Seat Belt Safety, Rape Prevention and Education/Centers for Disease Control and Opioid Abuse Site-based Grant/Department of Justice. Along with writing grants, she has implemented and evaluated evidence-based programs in community settings as well as statewide settings in order to meet goals and objectives for each grant.

In early 2017, she became the Garrett Lee Smith Memorial Youth Suicide Prevention Program Director and IVP Suicide Prevention Program Manager for Arkansas. Mandy is a certified trainer for safeTALK, suicideTALK, Making Educators Partners and Question, Persuade, Refer (QPR).

Woodruff, Terena

Terena Woodruff is the Director of Counseling for Cabot Public Schools in Cabot, AR working with 26 building counselors and serving as the district's foster and homeless liaison. She has been a teacher, school counselor, and assistant building administrator during her 28 year career. Terena has earned a BSE in Early Childhood Education and master's level certifications as a reading specialist, a school counselor, and in school leadership.

Wright, Michael

Michael is originally from Louisiana and a graduate of Hendrix College ('02) and The University of Tennessee College of Law ('05). He served as a law clerk for the chief judge of the Tennessee Court of Criminal Appeals in Knoxville and practiced civil law with the Barber Law Firm in Little Rock prior to joining the prosecutor's office in Pulaski County in 2012. He prosecuted numerous felony cases in the Domestic Violence/Sexual Assault Unit prior to his current assignment in the Gangs/Major Crimes Unit.

Yang, Lisette

Lisette was born in Mexico City but grew up in Guadalajara since infancy. In 1995, she married her husband Michal and officially moved to Arkansas in 1997. She became a US citizen in 2002, just one month before her son Carlos (13) was born. Ever since her arrival to the US, Lisette has been involved with the Arkansas community, while participating in many US-Latino events, and educating various populations about the Latino Culture/Diversity, Services for Immigrants and Violence in the Latino Community. In 2006 she was in charge of developing the first Latino Program for immigrant victims of crimes in this city; and during her tenure, she served over 2,500 victims and their families affected by various crimes including domestic violence, human trafficking, homicide, rape, extortion, child abuse and more. She currently works for the Children's Protection Center as a bilingual outreach educator for Child Abuse and Mandating Reporting, and as the full time bilingual forensic interviewer, conducting forensic interviews with English and Spanish speaking children where an allegation of physical or sexual abuse has been made. Lisette has been training since 1998 at various organizations including the UALR Spanish Program, the former Arkansas Global Programs, the former Arkansas International Center, and more recently at the Arkansas Victims Assistance Academy, various Pulaski County schools, Youth organizations, and more. She is also assured with the Arkansas Department of Education, this allows her to provide Professional Development hours for educators of any school setting.

**2018 ARKANSAS CONFERENCE ON CHILD ABUSE AND NEGLECT
REGISTRATION FORM**

Please fill out every section of this form

Submit form by fax: (501) 296-1927, email: accan@midsouth.ualr.edu, or

mail: UALR MIDSOUTH, Attn: Robin Wilson, 415 N. McKinley St., Suite 900, Little Rock, AR 72205

Last Name: _____ First Name: _____ MI: _____

Organization: _____

Title: _____

Mailing Address: _____

City: _____ State: _____ Zip: _____

Work Phone: (_____) _____ Cell Phone: (_____) _____

Email: _____

If you have a disability or special need, please let us know what accommodations are needed in order for you to participate. _____

SECTION II: CONFERENCE FEES

Conference Registration \$190 Early Registration before September 17, 2018

\$220 Registration after September 17, 2018

\$160 per person when 5 or more people from

the same organization register at the same time

\$75 Student Registration

\$110 One-Day Registration

\$240 Day of Conference Registration

Total Amount Due: \$ _____ Total Amount Enclosed: \$ _____

Payment can be made by check, money order, credit card, or agency purchase order. Payment is due with registration form. Checks can be made out to MIDSOUTH/UALR. Only Visa and MasterCard will be accepted.

Credit Card Payment Process:

Name as it appears on card _____

Card Number _____ 3-Digit Security Number _____

Expiration Date _____ / _____ Card Holder's Signature _____

Card type: Visa MasterCard

Agency Purchase Order Number: _____

My Agency should be billed for my registration. Please designate billing address
if different from above: _____

Registrations cancelled before October 1, 2018 will be refunded, less a \$50 handling charge. No refunds will be given for cancellations made after that date. Registration fees may be transferred to another individual with no charge.



MidSOUTH
SCHOOL OF SOCIAL WORK

Arkansas Conference on Child Abuse and Neglect

Attn: Robin Wilson

415. N. McKinley St.

Suite 900

Little Rock, Arkansas 72205